

AS4-Point Bravo  
and  
AS9-Nimblewill GAP  
DRAFT  
28-29MAR2026

as of 23MAR2026

as of 23MAR2026

Aid Station 4- Point Bravo

34 45.96N 84 09.85W

34.7766 LAT

-84.1736 LONG

EM74VS Grid Square



## Winlink Callsigns

Star (K4S), Lee

AS#1 Call (W4HJ) Hank, K4HYJ (White Oak)

AS#2 Call (W4MPZ) Hank KI4MPZ & GLEN K4KKM (Mulky Gap)

AS#3 Call (W4JNR) Hank W4JNR (Skeenah Gap)

AS#4 Call (KK4YLG), Hank K4YLG (Point Bravo)

AS#5 Call (KM4MAD), Joe K4MAD (Capling Gap)

AS#6 Call (W4KIB) Kevin K4KIB (Creek)

AS#7 Call (K4SJR), Frank KRSJR (Winlink)

AS#8 Call (AF4DN), Felton AF4DN (Jake)

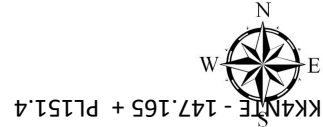
AS#9 Call (KO4UQF) Bill KO4UQF (Nimblew)

AS#10 Call (W4HHH) Bill K9HRO (Amicalola Falls)

**Pending Update from Race Command**

**Frank GDR IC- K4SJR 770-789-5633**

GADR ICS-217



Repeater  
#1 KC4AQS 305 + PL 100  
#2 K4SJR 145.4 - PL 123  
#3 K4SJR 145.4 - PL 123  
#4 NG4RF 441.675 - PL 100

Packet  
#1 W4NWG-10 145.710  
#2 KM4MAD-10 145.710  
#3 KN4KBL-10 145.710  
#4 WD4EMA-10 145.750  
#5 K4WOC-10 145.710

Digipeater W4HBS-14 145.710

Repeater  
KK4NTE - 147.165 + PL151.4

VARA  
NWG-10 144.910  
#2 -10 145.630

Pending Update from Race Command

## GADR Course Overview

Georgia Death Race		74 MILE					
AID STATION		LOCATION		SUPPORT		TIMING	
NAME	DISTANCE	TOTAL DISTANCE	AID	DROP BAGS	CREW ACCESS	CUTOFF TIME	HOURS
<b>START -</b>						<b>5:00 AM</b>	
White Oak	7.50		Light Aid	NO	NO	7:50 AM	2:50
Mulky Gap	5.00		Full Aid	NO	NO	9:20 AM	4:20
Skeenah Gap	8.50	21.00	Full Aid	NO	YES w/ Paid Pass	12:00 PM	7:00
Point Bravo	6.25	27.25	Full Aid	YES	YES w/ Paid Pass	2:05 PM	9:05
Sapling Gap	4.75	32.00	Full Aid	NO	NO	4:20 PM	11:20
Long Creek	5.75	37.75	Full Aid	NO	NO	5:50 PM	12:50
Winding Stair	6.00	43.75	Full Aid	NO	GROUP 1	7:45 PM	14:45
Jake Bull	7.25	51.00	Full Aid	NO	GROUP 2	10:00 PM	17:00
Halfway House	5.00	56.00	WATER ONLY	NO	NO	11:45 PM	18:45
Nimblewill	6.25	62.25	Full Aid	NO	NO	2:00 AM	21:00
Vistors Center	7.00	69.25	NO AID (just cutoff)	NO	NO	4:30 AM	23:30
<b>FINISH</b>	4.75	74 ish			YES	7:00 AM	25:00

## GADR Cut-Off-Times

PT Bravo Cut is 14:05. No racer may leave PT Bravo after 14:05

Nimblewill Cut is 02:00. No race may leave Nimblewill after 02:00

## GADR-Point Bravo Overview

### Point Bravo- GA Death Race

**Race Time** 08:00 - 14:05+ (Until all runners accounted for through PT Bravo)

**Location:** Blue Ridge (Approx 90-minute Drive from Woodstock via 575 North to GA 515 to 60S (approx. 13 miles from GA-515))

Setup Friday Evening for Advance Party:

Setup Antennas, Radio Coms, etc

**Saturday Arrivals-** requested to arrive by 09:00 for Safety Briefing, finalize plan, coordinate with Aid Station, and accept first runner approx. 10:00am

**Safety Briefing** at 0900am 30MAR 2022

For anyone who has not participated in GA DR:

1. Establish Control of all Runners Entering PT Bravo Aid Station and Dropping at PT Bravo Aid Station. Record the Runner ID, Time Entered, and Drop status. Catch the Runners either just prior to Bridge or after crossing Bridge. DO NOT record runner more than one time on tracking chart! Coordinate with each other...
2. Consolidate tracking information at our PT Bravo HQ
3. Communicate PT Bravo Information to Race HQ via VHF, HF, Digital, etc
4. Prepared to request advance medical care if Aid Station does not have Cell/Coms
5. Prepared to setup or assist in setup of LZ if needed vic Pt Bravo (HWY 60)
6. At end of Race, ensure all records are accurate and we have 100% accountability of all Racers before we End of Mission, and communicate that locally with PT Bravo HQ Race Lead, and our Race HQ
7. Have a great time, giving back to the community, and increase our experience, knowledge, and training operating outside our normal QTY environment.
8. Ensure Safety for our Team, Racers, and volunteers

### Comments

1. At this time plan on being self-sufficient with food/water/snacks. Once the race begins, we are pretty busy for the next 5 hours.
2. Send Winlink Reports to AS5 through AS10

## GADR Personnel

The following personnel have committed in 2026 to assist with AS4-Point Bravo or AS9-Nimblewill.

### AS4- Point Bravo

Position	Name	Cell	Callsign
<b>Team Lead</b>	Ryan Rucker	229-520-9164	KK4YLG
<b>Winlink-1</b>	Stan Ham	404-731-7314	WB9GFA
<b>Winlink-2</b>	Stephen Kuhn	404- 409-2170	KK4YDY
<b>Confirmed</b>	Rodney Molly	786-390-3519	W5RFY KJ5LUK
<b>Confirmed</b>	Jonathan Price	706-525-1807	KM4ZHZ
<b>Confirmed</b>	Tom Young	404- 451-4939	W3TY
<b>Confirmed</b>	Shawn Walsh	770-722-7598	K4ZRI
<b>Confirmed</b>	Mike Vincent	404-642-4912	KQ4MV
<b>Confirmed</b>	Tom Perry	678-517-3163	KN4LSE

### AS9-Nimblewill Gap

Position	Name	Cell	Callsign
Team Lead	Bill Sangster	404-317-2442	KO4UQF
Confirmed	Rob Bruderer	404-710-9630	W1JKU
Confirmed	David George	678-643-9286	KJ4BED
Potential	Robin	678-313-7316	WA4LIK
Potential	Rod		KO4PWB

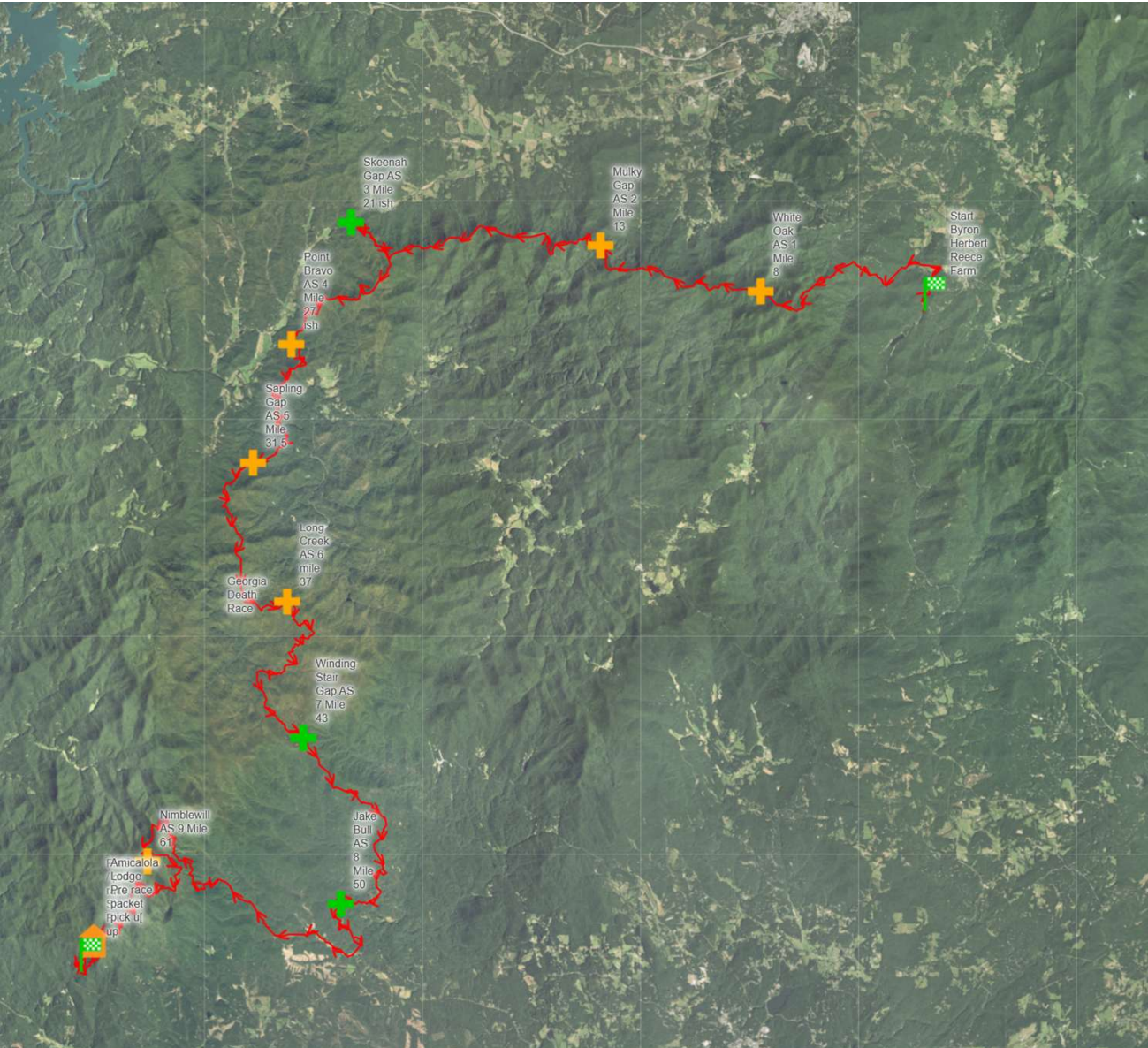
## Key Locations- Point Bravo

Location	Grid/Description	Comment
PT Bravo Arrival HWY 60	34 45.96N 84 09.85W Altitude 2061'	<ul style="list-style-type: none"> <li>13.4 Miles South on 60 from 515-BlueRidge.</li> <li>Look for Sign on Right - Natural Forest- Toccoa River Swinging Bridge.</li> <li>GADR Aid Station4 and PT-Bravo HQ will be on East Side of road Alternate Location of Point Bravo on West side up the Trail 1/10th mile</li> </ul>
PT Bravo HQ Alt Site if Needed	34 45.88'N 84 09.90W ALT 2105.	<ul style="list-style-type: none"> <li>PT Bravo HQ Location identified as same location as previous year for HF, VHF, UHF, DSTAR (1/10<sup>th</sup> mile up trail from 60S)</li> <li>Winlink Success via Vara HF and VHF (See Com Plan for More details)</li> <li>DSTAR Success (See Com Plan for More details)</li> <li>FM via W4HBS Repeater Success (See Com Plan for More details)</li> <li>Room for only 2 Cars for Advance Party, Rest must park at Alternate Locations and prepare for car-pool</li> </ul>
PT Bravo-Team Arrival	60' from Aid Station 4 East of HWY 60	<ul style="list-style-type: none"> <li>Setup Control Point just off of wooden bridge in order to stay in physical/voice/and visual contact with Aid Station.</li> <li>Need to be able to identify Dropped Runners that make decision between Arrival and while at Aid-Station.</li> <li>Hand-off Arrival Tracking Worksheets on regular basis to W1JKU CMD Post</li> </ul>
Aid-Station 4 PT Bravo HQ 20' North of Aid-Station	20' West of HWY 60	<ul style="list-style-type: none"> <li>Location manned by GADR race volunteers and medical personnel. They are in charge of Aid Station 4 while ARES/CARS is supporting them and the race facilitating accurate accountability of racers and facilitating relaying information as necessary into and out of Point Bravo Location. We are they are partnership and support this event.</li> </ul>

## Key Locations- Parking and Facilities

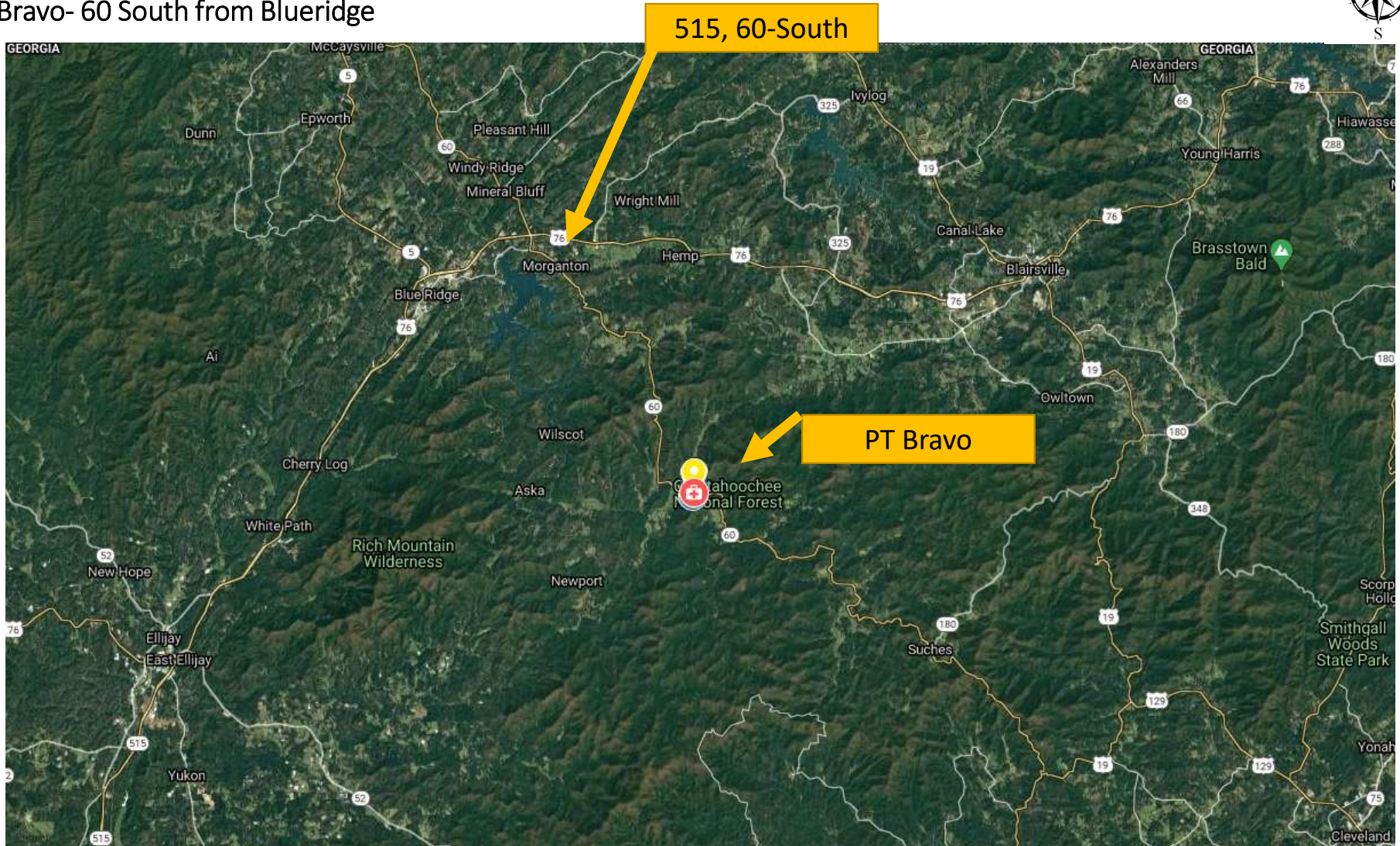
**\*\* Blue Ridge Ingles Parking should not be needed.**

Location	Grid/Description	Comment
Blue Ridge Ingles	5679 Appalachian Hwy, Blue Ridge, GA 30513	<ul style="list-style-type: none"> <li>Any ARES/CARS Member that wishes to car-pool may do so by using Ingles as a Parking location. This location is approx. 2 miles South of HWY 60 or 15.9 miles from Point Bravo</li> <li>From this location you may contact to HQ on cell, DSTAR or W4HBS Repeater (See Com plan for more details)</li> </ul>
Alternate Parking	34 45.63N 84 10.46W ALT 2052	<ul style="list-style-type: none"> <li>Approx. 9/10 of a mile past Point Bravo HQ on trail, is a parking area that will support 4 cars or so. There are other areas along the trail, just ensure you do not block traffic that utilizes the trail to access the Park/Swinging Bridge that is located 3.1 miles West of HWY 60 on this same trail.</li> </ul>
Overflow Parking	4.2 Miles North of Point Bravo East side of road	<ul style="list-style-type: none"> <li>On East Side of Road heading North from Point Bravo, approx. 4.2 miles, you will see an AT Trail parking sign and an area you may park just off road. Use this at your own choosing and safety.</li> </ul>
Public Restrooms- Sunoco	12305 Morganton HWY 30560	<ul style="list-style-type: none"> <li>11.6 Miles North of PT Bravo on HWY 60, across from Morganton Post Office</li> </ul>
Public Restrooms- Dunkin Donuts/Exon	515/GA60	<ul style="list-style-type: none"> <li>13.4 Miles North of Point Bravo</li> </ul>
Swinging Bridge End of Trail	34 44.34N 84 10.21W ALT 2084	<ul style="list-style-type: none"> <li>3.1 Miles West of HWY 60 (Pt Bravo/Aid Station) the vehicle trail ends and you must walk to swinging bridge to see it. FYI, you are being instructed on this as you may be asked from non GADR folks that come out to see the bridge and want to know where it is. The vehicle trail is drivable on SUV/Trucks/Jeeps, etc. I would not recommend sports cars as we saw last year ☺</li> </ul>





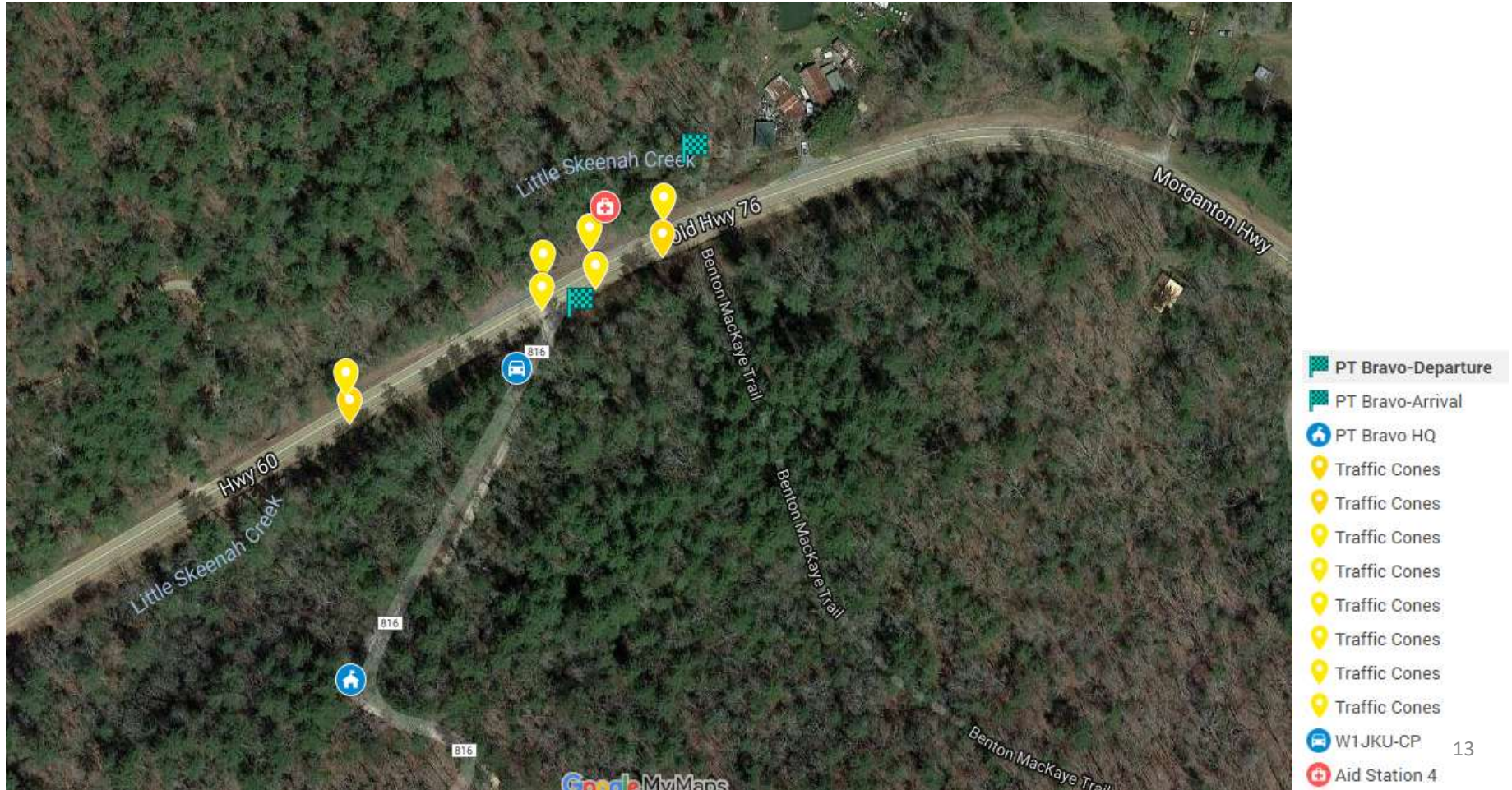
# Point Bravo- 60 South from Blueridge



# Overview- Point Bravo



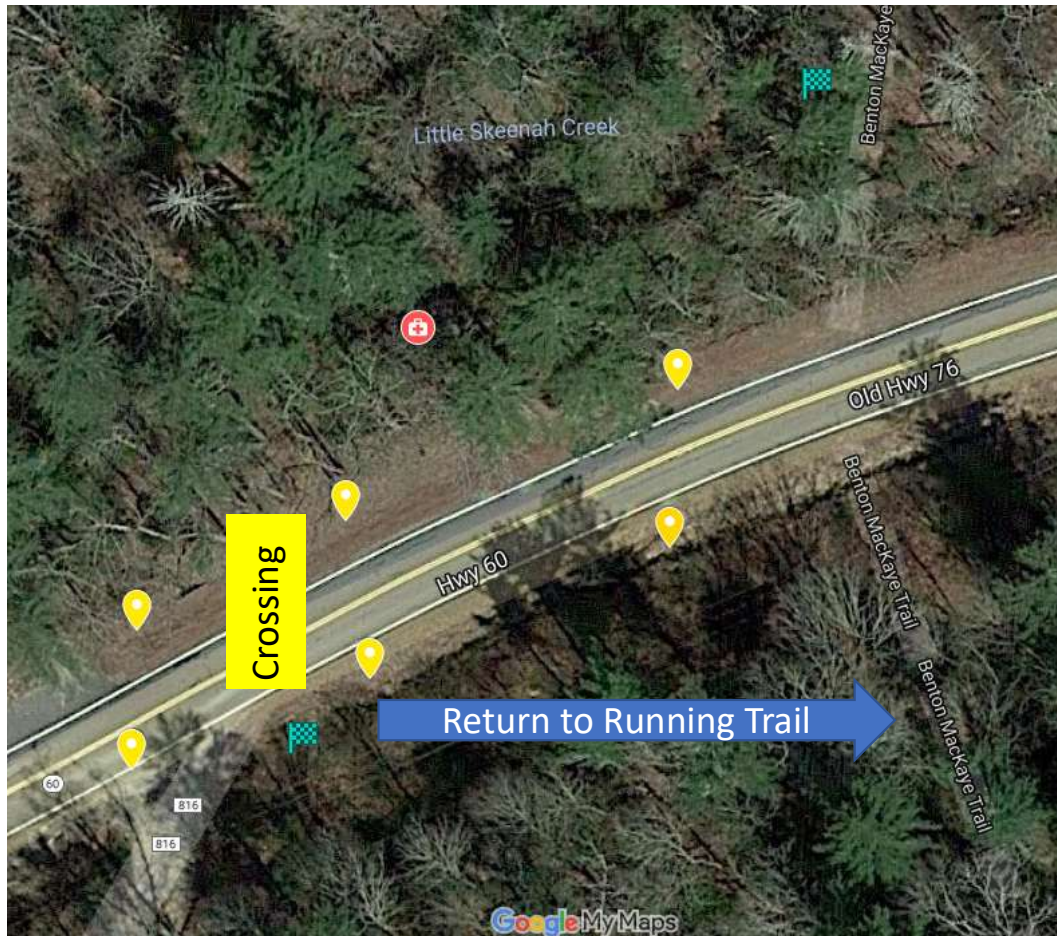
\*\* Traffic Control is Race Responsibility not ARES/CARS





# Runner Arrival Point Bravo

\*\* Traffic Control is Race Responsibility not ARES/CARS



- PT Bravo-Departure
- PT Bravo-Arrival
- PT Bravo HQ
- Traffic Cones
- Traffic Cones
- Traffic Cones
- Traffic Cones
- Traffic Cones
- Traffic Cones
- Traffic Cones
- Traffic Cones
- W1JKU-CP
- Aid Station 4

## Concept of Operation

- Arrival and Team will record the Racers Bib-Number and Time they Arrived or Drop in the Corresponding Columns on the Tracking Chart. Each Form will be filled out in complete and ensure all information is readable. As Tracking Worksheets are filled out, they will be delivered to the PT Bravo HQ Physically versus sending all data over VHAM16D.
- As situation requires, Arrival Team will communicate critical information or needs real-time via Simplex 147.585 to Point Bravo HQ. **See Script Details for Instructions.** (Example: Injuries, Lost Runner, etc..)
- HQ will leverage the real-time information provide by Arrival/Departure Teams and provide to Race HQ or Aid Station 3/5 as requested
- HQ will update Excel File from Actual Forms received by Arrival/Departure teams and Upload to Race Command via Winlink
- Point Bravo HQ will audit the Race file received and resolve any discrepancies should there be any.
- Arrival Team must remain in contact with Aid Station and ensure we account for any runners that Drop from Race and if there is any assistance we can provide, or help communicate, we will perform that task to the best of our abilities. Ensure HQ is aware of any requests from Aid-Station or problems encountered. HQ will ensure ICS-213 is entered and tracked for all critical events.
- ARES Members should not be performing Road-Guard Duties. Race Team/Aid Station should be manning the road-crossing and ensure all runners safely cross the road and get back on appropriate trail.

## Coordinating Instructions

- The Trail to PT Bravo Alternate HQ location is open to all visitors as this leads to a Suspension Bridge part of the Park.
- Road Guard Vests, Reflective Vests or Jackets must be worn by Cherokee ARES/CARS Members supporting Point Bravo when within 25' of Road. It is preferred that all members have such clothing, regardless if it has markings of ARES, Radio, etc. on it. Safety is the Priority.
- If an UNSAFE ACT is Observed, make an on-the-spot correction, Do Not let an Unsafe Act continue. Everyone is a Safety Officer...
- Team-Members arriving on Saturday are asked to arrive prior to 8:00am to sign-in, finalize plan, conduct m Briefing by 08:30 all teams in position by 09:00am
- PT Bravo must obtain 100% Accountability of all Runners that Depart Aid-Station 3 for Aid Station 4 (including Drops at Point Bravo).
- If Landing Zone (LZ) is required for a medical Evacuation and no Medical/Law Enforcement Officers are on site, W1JKU will set the location North of PT Bravo along HWY 60, 100meters from parked vehicles, where road is flat, straight, clear of obstacles, and can be seen for some distance. Team will assist as necessary to secure LZ and ensure no traffic enters LZ while Medevac Operations are underway. (Refer to LZ Instructions that will be used if activated).
- Sleeping. Those sleeping at PT Bravo Friday night, must be prepared to be self-sufficient with facilities, food, water, sleeping gear, clothing, etc.
- If we have good command and control of all running information and tracking, we should be end of mission by 16:00hrs. If there are any discrepancies, we will need to adjust.
- Cell Phones do not work well along HWY 60. Cell Phone coverage improves near Point Bravo HQ. When travelling to PT Bravo if this is your first trip, do not rely on Wayze or any other Cell Navigation as you will lose coverage and will be off by several miles. Please augment your travel with your vehicles odometer from HWY 515/60 and remember we are 13.4 Miles from 515/60 Intersection along HWY 60 South.

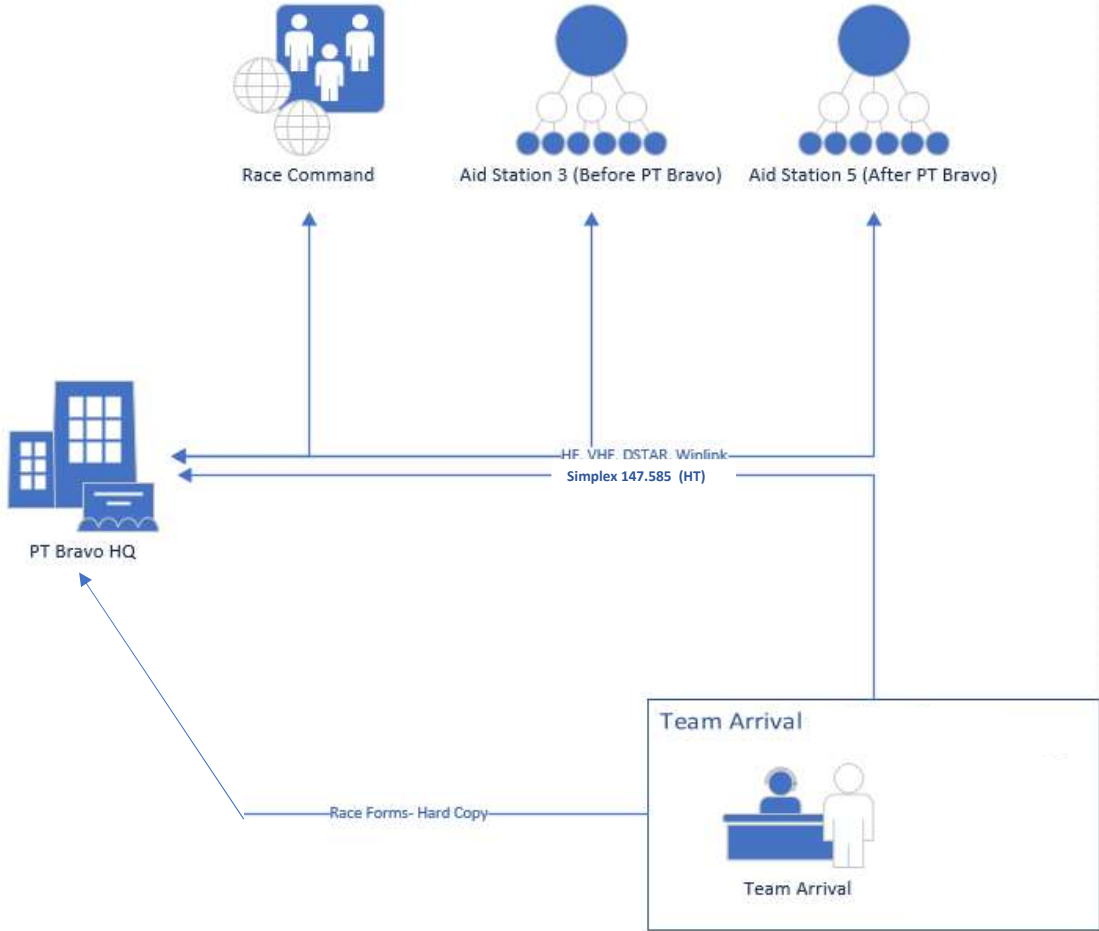
## Coordinating Instructions

### **Communications**

- Friday Night and Saturday AM, PT Bravo HQ will monitor via HT the W4HBS Repeater on 443.225 + PL100.0 should you need assistance as you get close to Blue Ridge GA. We will also monitor 146.425 Simplex via HT.
- When communicating on Simplex 146.425 Saturday morning through End of Mission, please remember this channel will be prioritized for Safety Issues as well as Tracking Race Information. Please keep non-essential communication to a minimum when traffic is flowing.

# Overview of COMS Flow

Overview of COMS Flow





## PT Bravo Initial Positions (Rotations and Adjustments will occur)

Position	Assignment	Comments
PT Bravo Lead	KK4YLG-Ryan	Arriving on Friday Afternoon 25MAR-Advance Party
PT Bravo Assistant	WB9GFA-Stan	Arriving on Friday Afternoon 25MAR-Advance Party
a. HQ Winlink Operator.	KK4YLG-Ryan	a. Utilize HQ-ID5100 A-Side for Pt Bravo Arrival b. Utilize HQ-ID5100 B-Side for .805 Race Command c. Utilize IC7100-HF for Winlink and COMS with Race Command and other Aid Stations as needed. d. Utilize Laptop to enter Race Information into Spreadsheet for transmission via Winlink.
b. PT Bravo Arrival Data Entry-Excel Communicate Spreadsheets to GADR Remote Locations via Winlink	TBD	Due to Proposed Consolidated Setup near Aid-Station, We will simplify passing Race Information between Arrival/Departure teams and PT Bravo HQ by simply turning in forms as filled out. Write Legibly so data can be read by others. We will only need to pass key updates/critical information on HT's and avoid a lot of confusion and unnecessary work... Goal is to have accountability, low stress, and some fun. We want to improve process in order to reduce the REQUIRED number of personnel and equipment needed to perform this Aid-Station in the future. We welcome more participation, but want to refine to operate lean and mean when resourcing requires...  Marty and Stan and Rob will help get the process rolling and then we will interchange to give everyone an opportunity to Send/Receive Winlink and operate HF/VHF Radio's. If you have never performed RF Winlink or operated HF- now is the time to gain some experience. Great Training Opportunity and Fun!
Simplex 147585 Net Control and Liaison to Race Command and other Aid Stations.	TBD	Assist from HQ manage Coms/Needs from PT Bravo Team on VHAM16D as well as monitor and pass traffic as requested from Race Command and other Aid-Stations.
	TBD	Record All Racers Arriving into PT Bravo and Capture Racers Dropping at PT Bravo
PT Bravo Floater 1	TBD	Float between HQ RTO and Arrival/Departure Teams. Alternate Out
PT Bravo Floater 2	TBD	Float between HQ RTO and Arrival/Departure Teams. Alternate Out

## PT Bravo Equipment List

Point Bravo- GDR	Quantity	UOM	Item	Required/ Optional/ Preferred	Comments
KK4YLG Ryan	1	EA	HQ Tent/Shelter Pop-up 10x10 minimum	Preferred	Will have 2 to set up
KK4YLG Ryan	4	EA	Clipboards for Tracking Charts	Required	Need 2 at Entry and Exit Point and 2 at HQ
Individual	10	EA	Black Pens	Required	
WB9GFA/KK4YLG			VHF Antenna	Required	Ryan and Stan Bringing mobile antenna to attempt to work VHF
WB9GFA/KK4YLG		EA	HF Antenna	Required	Ryan Bringing Buddipole/ Stan Bringing Hamstick and endfed
KK4YLG Ryan	1	EA	Fire Extinguisher	Required	
WB9GFA-Stan	3	EA	Antenna Rope for VHF/UHF/HF Antenna	Required	100', 100', 100'
KK4YLG - Ryan	1	EA	Roll of Bright Engineer Tape	Required	Mark Antenna Lines and also Mark Exit Route to trail- Runners were confused last year and needed guidance to trail
KK4YLG Ryan	1	EA	Tables for HQ	Required	Table PT Bravo VHF RTO and PT Bravo HF RTO
WB9GFA Stan	1	EA	UHF/VHF ID5100 Radio	Required	Radio for Point Bravo VHF/UHF COMS
WB9GFA/KK4YLG	1	EA	HF ICOM 7100 Radio	Required	Radio for Point Bravo HF COMS
KK4YLG Ryan	1	EA	First-Aid Kit	Required	
KK4YLG Ryan	-	EA	PT Bravo Tracking Worksheets	Required	Rob will print and bring worksheets
WB9GFA-Stan	1	EA 100'	Coax Cable VHF/UHF	Required	
KK4YLG Ryan	1	EA	Antenna Analyzer	Required	If anyone brings another one we can gladly use it
KK4YLG Ryan / WB9GFA - Stan	3	EA	Deep Cycle Boat Battery for HF/UHF Radio	Required	We will use as primary and Generator as backup during race
KK4YLG Ryan	2	EA 50ft+	Extension Cords	Required	need to run from Generator to HQ Radio/RTO Tables
WB9GFA-Stan	1	EA	Antenna Launcher or Sling Shot	Required	
ALL	1	EA	Reflective Vest or Reflective Belt.	Required	All participants require a Reflective Vest or Reflective Belt. (No need to have Logo's, just need for Safety. You can pick up at Walmart...)
ALL	1	EA	Chair	Required	
ALL	1	EA	Headlamp/Flashlight	Required	Make sure to bring extra batteries. lamp will only be needed if you are coming up early

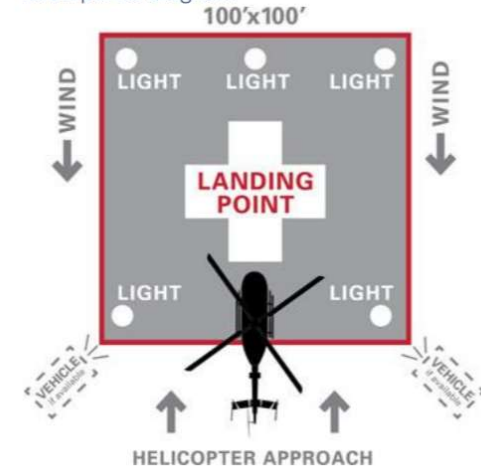
# Landing Zone- Medevac

## Landing Zone Standards

As volunteer ARES/CARS members spend many weekends in remote areas, it is important to understand basic LZ Standards when and if a MEDEVAC is required by air. Some of the places we may travel, are far from the beaten path. A MEDEVAC request through 911 may be your best option. This section provides a brief overview of the requirements in establishing a Landing Zone.

- Flat Terrain clear of debris and brush taller than knee high.
- Free of obstructions including fences power lines, wires, etc.
- Minimum terrain of 60 x 60 feet, Ideal is 100 x100 feet.
- Maintain additional 200' perimeter keeping bystanders away from the approaching aircraft.
- Mark each corner of LZ with VX17 panel, flares, chem-lite sticks, parked vehicles, or red lights.
- Helicopters prefer to land into the wind.
- If overhead obstacle (power lines) park vehicle under power lines as point of reference for pilot.
- Notify Aircraft or 911 how LZ is arranged including obstacles, markings, etc.
- Notify Aircraft or 911 the direction of Wind (N-S-E-W) and strength (calm, light, variable, strong).
- Notify Aircraft or 911 the Clearest path of Approach is from the (direction).
- **Additional LZ Do/Do Nots**
  - Do Not Turn on White Lights or Off-Road Lights at night when aircraft is approaching.
  - Do not use Engineer Tape/Flag Tape as it can be sucked up into the rotors.
  - Do not approach the helicopter until the rotor blades have stopped.
  - Do Not walk around the tail of the aircraft, even when aircraft is shut down.
  - Take off all Hats, they can be sucked up into the rotors.
  - Only approach the helicopter only from the front, once directed by the flight crew.

Example LZ Diagram



## Emergency Services PT Bravo

- Fire/Rescue—911
- Sheriff- [\(706\) 632-2044](tel:7066322044)
- [GA State Patrol- 706\) 632-2215](tel:7066322215)
- AIREVAC TBD. Option1 Nation Wide: 151.505 FM-Narrow
- Point-Bravo, we are 13.4 Miles south on HW 60 from 515. (HWY60 and Toccoa River Swinging Bridge Turn Off)  
34 45.96N 84 09.85W Altitude 2061'

## SAFETY Briefing

Team Lead will conduct Friday Evening for Advance Party and Saturday 09:00 at PT Bravo HQ for All

- All PT Bravo Volunteers must sign in and out with WB9GFA upon arrival and prior to departure.
- Do not go anywhere alone, always have a buddy and maintain coms with team. If you leave your point of assignment, communicate with HQ prior for permission and tracking.
- No Generators or fires will be in or proximity to sleeping quarters. Carbon Monoxide is a silent killer.
- Store Fuel cans out of the sun and away from Generators or sources of ignition.
- A Fire Extinguisher must be within 25' of all Generators.
- In case of lightening or severe weather, disconnect all antennas, PT Bravo will discontinue Normal Operations. No PT Bravo Personnel will be in the wood-line, Get to open ground. Lightening will travel through the root-systems underneath your feet. Branches and limbs falling from trees induce high risk of impalement. We will coordinate with AID Station and continue to track runners with the least amount of PT Bravo Personnel and limit risk to weather. When weather has passed, W1JKU will conduct a safety assessment before return to operation.
- Safety Vests, Jackets, or Reflective Clothing must be worn within 25' of HWY 60 by all Point Bravo Personnel.
- Leave Wildlife and snakes alone.
- Use Common Sense, Look after your team and if you see an Unsafe Act, Stop it, and report it to HQ when situation allows.
- Do not assume cars on HWY 60 will stop for you or Racers. Ensure Vehicles are fully stopped before you enter the road-way and attempt to assist runners cross safely.
- Wind and Falling Limbs- Based on weather/wind, take additional precautions to prevent injury from fallen limbs- stay clear of overhead limbs.
- Be Safe, have a great day, enjoy giving back to the Community and Remember, you are representing Cherokee County!

Aid Station 9- Nimblewill

34.594738 -84.222233

34 35' 41.0562 LAT  
-84 13' 20.0388 LONG

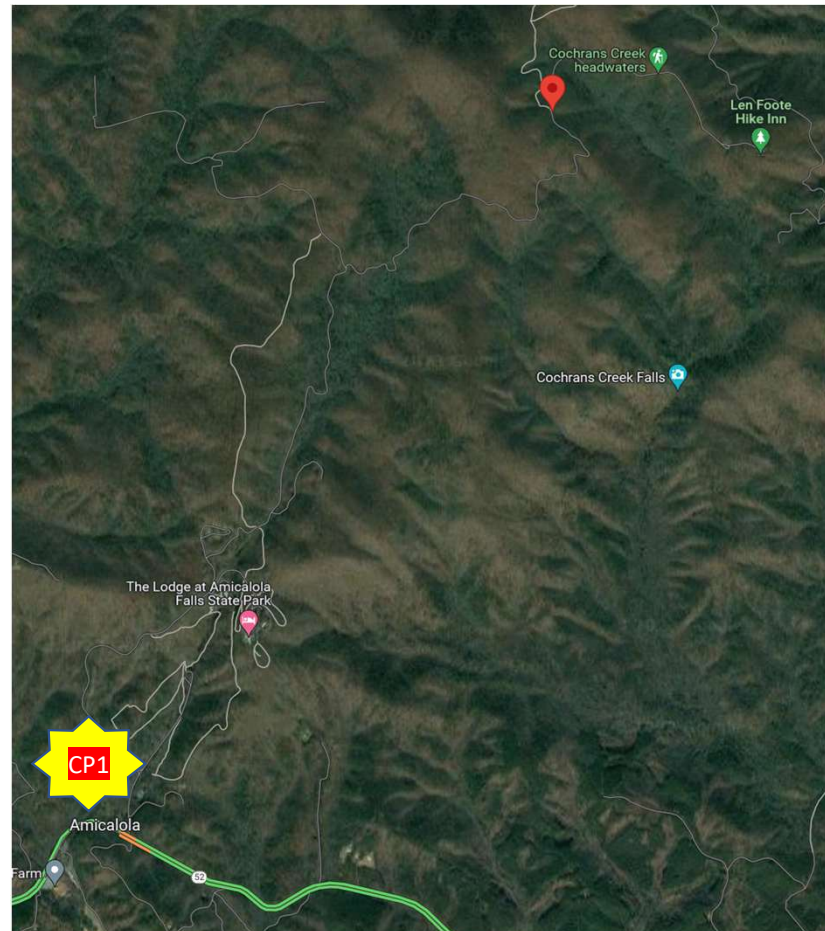
EM74VO Grid Square

# AS9 Nimblewill Gap

(34.594738 -84.222233)

- CP1- From HWY 52, Enter Amicolola Falls State Park (Amicolala Falls State Park RD)
- CP2-Turn Left on Amicola Park Rd/Top of the Falls Rd(Visitor Station on Right)
- CP3-Turn Left on Top of the Falls Road and then Right on High Shoals Rd. 34.569715, -84.245631
- CP4-Turn Right Nimblewill Gap Rd (If you miss turn, you will find High Shoals Baptist Church) 34.585808, -84.236159
- CP5-Park when you see gate on left and Road Close sign on right. 34.594738 -84.222233

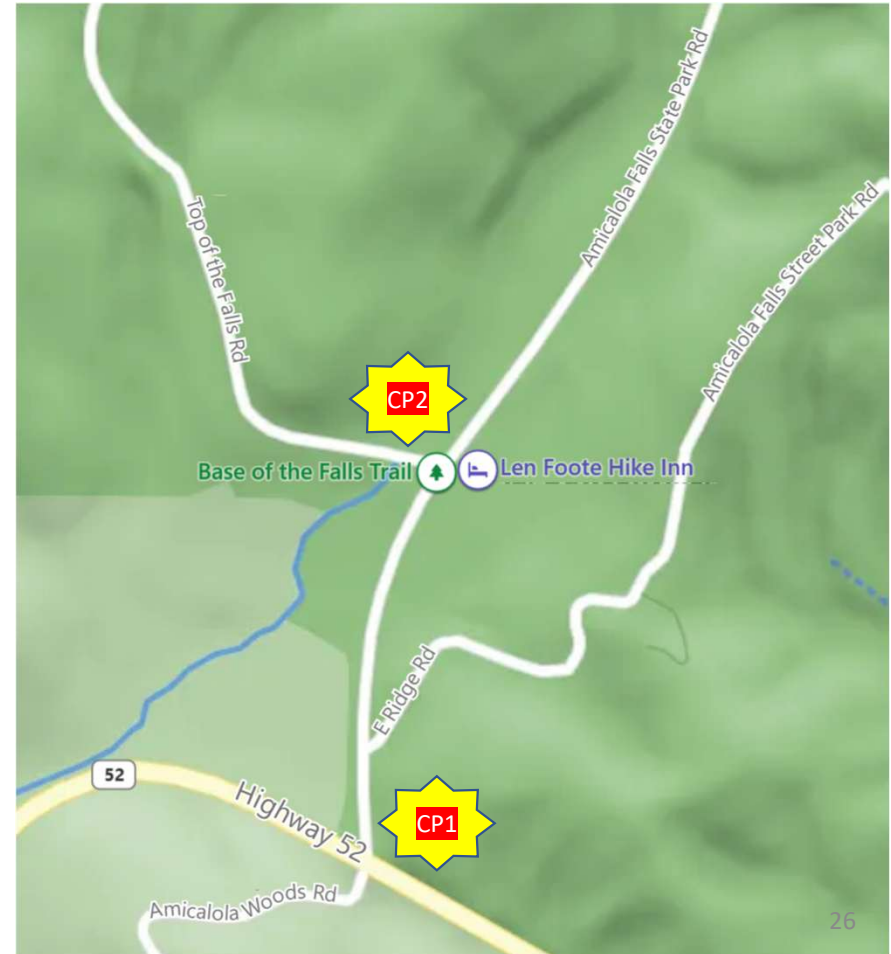
\*\* Your GPS may have a misspelling of Nimblewill Gap Road as Nimberwill Gap Rd. It's the same road 😊



# Turn by Turn from HWY 52

- CP1-From HWY 52, Enter Amicolola Falls State Park (Amicolola Falls State Park RD)
- **CP2-Turn Left on Amicola Park Rd/Top of the Falls Rd (Visitor Station on Right)** 34.554480, -84.250789
- CP3-Turn Left on Top of the Falls Road and then Right on High Shoals Rd.
- CP4-Turn Right Nimblewill Gap Rd (If you miss turn, you will find High Shoals Baptist Church)
- CP5-Park when you see gate on left and Road Close sign on right.

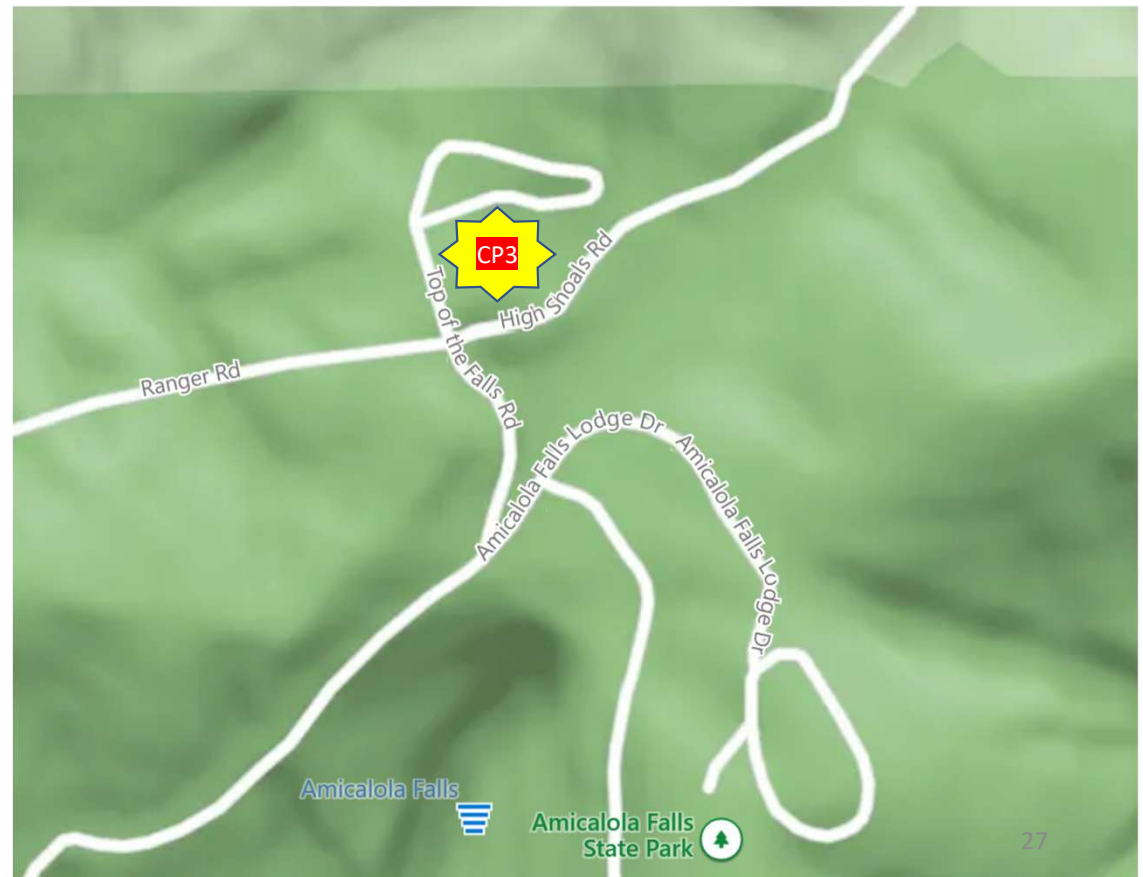
\*\* Your GPS may have a misspelling of Nimblewill Gap Road as Nimberwill Gap Rd. It's the same road 😊



# Turn by Turn from HWY 52

- CP1-From HWY 52, Enter Amicolola Falls State Park (Amicolola Falls State Park RD)
- CP2-Turn Left on Amicola Park Rd/Top of the Falls Rd (Visitor Station on Right)
- CP3-Turn Left on Top of the Falls Road and then Right on High Shoals Rd. 34.569715, -84.245631
- CP4-Turn Right Nimblewill Gap Rd (If you miss turn, you will find High Shoals Baptist Church)
- CP5-Park when you see gate on left and Road Close sign on right.

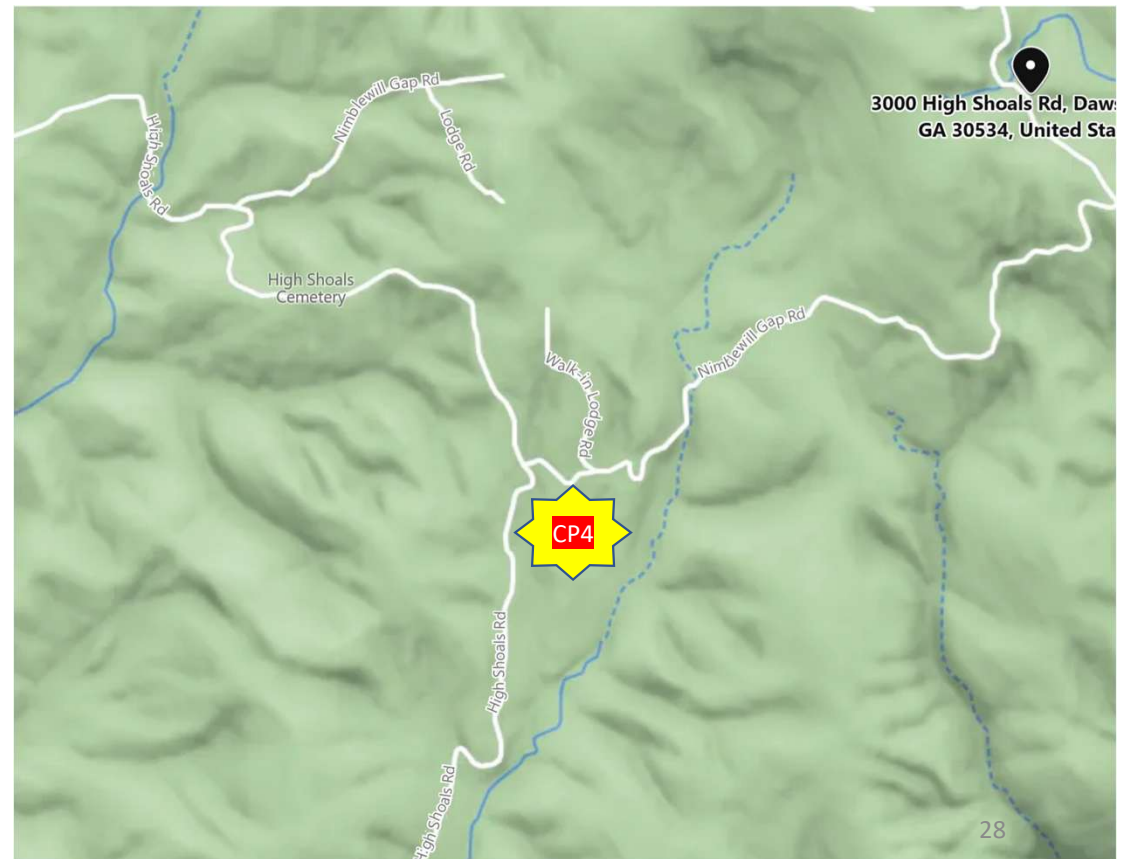
\*\* Your GPS may have a misspelling of Nimblewill Gap Road as Nimberwill Gap Rd. It's the same road 😊



# Turn by Turn from HWY 52

- CP1-From HWY 52, Enter Amicolola Falls State Park (Amicolola Falls State Park RD)
- CP2-Turn Left on Amicola Park Rd/Top of the Falls Rd (Visitor Station on Right)
- CP3-Turn Left on Top of the Falls Road and then Right on High Shoals Rd.
- CP4-Turn Right Nimblewill Gap Rd, (If you miss turn, you will find High Shoals Baptist Church) 34.585808, -84.236159
- CP5-Park when you see gate on left and Road Close sign on Right.

\*\* Your GPS may have a misspelling of Nimblewill Gap Road as Nimberwill Gap Rd. It's the same road ☺



# Turn by Turn from HWY 52

- CP1-From HWY 52, Enter Amicolola Falls State Park (Amicolola Falls State Park RD)
- CP2-Turn Left on Amicola Park Rd/Top of the Falls Rd (Visitor Station on Right)
- CP3-Turn Left on Top of the Falls Road and then Right on High Shoals Rd.
- CP4-Turn Right Nimblewill Gap Rd (If you miss turn, you will find High Shoals Baptist Church)
- **CP5-Park when you see gate on left and Road Close sign on right. (Pull forward as runners will come down trail from the North and will exit on Walk In Lodge Rd)** 34.594738 -84.222233



\*\*\* Google Maps and GPS differs on naming of road. Nimblewill GAP Road versus Amicolola Pk Rd. The GPS Coordinate is correct: 34.594738 -84.222233

# CP5/ Aid Station 9



We must get runner BIB Numbers as they come down trail towards us and around this closed gate.



After runners get past gate, they will enter/pass the Aid station and continue the route pass the Road Closed sign on the right.



# AS9-Comments

- Bring \$5.00 for Parking, depending on ranger on duty, you may have to pay and need exact change.
- Emergency's- Call 911
- All Volunteers are expected to stay over night and not travel back in the dark- The unpaved road has many opportunities for serious incidents at night/limited visibility
- Approx 1hr 40 minutes to Nimblewill Gap from Sixes Road
- Voice Repeaters easy to access from Nimblewill Gap from Vehicle Antenna: (AC4AQS-Jasper, K4WOC-Gordon County)
- Equipment
  - Antennas:
    - 80m Endfed (NVIS) with Spikerbeam pole to prevent having to put in tree. (Rob-W1JKU)
    - 10-40m Buddistick (Rob-W1JKU)
    - 2M Vehicle, potentially put antenna in tree if needed
  - Need Pop up Canopy/Shelter (W1JKU-Rob)
  - Need extra laptop to run on 12v battery (**W1JKU-Rob**)
  - Headlamps/lights needed to operate of 12v battery (**TBD**)
  - Solar (Rob and Car Battery to run 12v lights)
- Be Ready for First Runner between 14:00 – 16:45. Team will track on runners on tracking Charts, to be provided during Club Meeting in 11March. Upon arrival of W1JKU, Winlink will be on the Air.
- **Send Winlink Reports to AS9-W4HHH (Consider P2P if no Gateway Access and Coordinate 145.730 or 145.740)**

## Nimblewill Gap (AS9) Equipment List

Point Bravo- GDR	Quantity	UOM	Item	Required/ Optional/ Preferred	Comments
KO4UQF-Bill	1	EA	HQ Tent/Shelter Pop-up 10x10 minimum	Preferred	Bob-N4BBG Volunteered Popup
W1JKU-Rob	2	EA	Clipboards for Tracking Charts	Required	Need 2 at Entry and Exit Point and 2 at HQ
Individual	5	EA	Black Pens	Required	
KO4UQF-Bill			VHF Antenna	Required	
KO4UQF-Bill	1	EA	HF Antenna	Required	
W1JKU-Rob	1	EA	Roll of Bright Engineer Tape	Required	Mark Antenna Lines and also Mark Exit Route to trail- Runners were confused last year and needed guidance to trail
W1JKU-Rob	2	EA	Tables for HQ	Required	Table PT Bravo VHF RTO and PT Bravo HF RTO
KO4UQF-Bill	1	EA	UHF/VHF ID5100 Radio	Required	Radio for Point Bravo VHF/UHF COMS
KO4UQF-Bill	1	EA	HF ICOM 7100 Radio	Required	Radio for Point Bravo HF COMS
W1JKU-Rob	1	EA	First-Aid Kit	Required	
W1JKU-Rob	-	EA	AS9 Tracking Worksheets	Required	Rob will print and bring worksheets
KO4UQF-Bill	1	EA 100'	Coax Cable VHF/UHF	Required	
KO4UQF-Bill	1	EA	Antenna Analyzer	Required	
KO4UQF-Bill	1	EA	Deep Cycle Boat Battery for HF/UHF Radio	Required	
W1JKU-Rob	2	EA	Deep Cycle Boat Battery for HF/UHF Radio	Required	
Individual		EA	Head Lamp to keep hand free, see in the Dark	Required	
W1JKU-Rob	TBD	EA	12V LED/Lantern Lights for HQ	Required	Need light to manage rosters, computer, etc
ALL	1	EA	Individual Chair	Required	
ALL	1	EA	Reflective Vest or Reflective Belt.	Required	All participants require a Reflective Vest or Reflective Belt. (No need to have Logo's, just need for Safety. You can pick up at Walmart...)
W1JKU-Rob	1		Christmas Lights-Battery?		
KO4UQF-Rob	1		Christmas Lights 120v		
W1JKU-Rob	1		Firepit- Check Fire/Rain day prior		
both			Food (Rob and Bill to Coordinate)		

# AS4 to AS9

24235 Morganton Hwy, Suches, GA 30... X

- 24235 Morganton Hwy, Suches, GA 30513, United States, United States  
 Leave at 6:04 PM
- ↑ Depart and head toward GA-60 / Morganton Hwy
  - *Unpaved Road*
- ↶ 59 ft  
 Turn left onto GA-60 / Morganton Hwy
- ↶ 13.8 mi  
 Turn left onto US-76 W / GA-515 / GA-2 / GA-5 / Zell Miller Mountain Pkwy  
 Pass National Title Pawn of Blue Ridge in 4.3 mi  
▲ *Serious Congestion*
- ↶ 19.6 mi  
 Turn left onto road
- ↑ 233 ft  
 Keep straight to get onto Green Field Rd
- ↶ 0.2 mi  
 Turn left onto GA-52 / Highway 52 E  
 Pass Chevron in 6.1 mi
- ⦿ 17.7 mi  
 At the roundabout, take the 2nd exit
- ↶ 1.6 mi  
 Turn left onto Amicalola Falls State Park Rd
- ↶ 0.3 mi  
 Turn left onto Top of the Falls Rd
- ↑ 1.2 mi  
 Keep right to get onto Amicalola Falls Lodge Dr
- ↷ 0.3 mi  
 Bear right onto road
- 253 ft  
 Arrive at destination  
 The last intersection before your destination is Amicalola Falls Lodge Dr
- **B** Amicalola Falls State Park  
 Arrive by 7:18 PM  
 418 Amicalola Falls Lodge Dr,  
 Dawsonville, GA 30534

